

Ruwac Industrial Vacuums

GV Series

Parts

Model No.

Serial No.

Filter No.

Start-Up Date:



Revision: A
Date: 12/22/2009

1



Ruwac Industrial Vacuums
54 Winter Street
Holyoke, MA 01040

Tel: (413) 532-4030
Fax: (413) 532-4039
www.ruwac.com

ISO 9001
REGISTERED



CONTENTS

WARRANTY	2
SAFETY INSTRUCTIONS	3
PARTS	5
TERMS & CONDITIONS	30

WARRANTY

1. RUWAC warrants that new equipment which are complete units and are sold and/or manufactured by RUWAC, Inc. will be free from defects in material and workmanship for a period of 18 months from date of shipment or 12 months from date of start-up, whichever come first. RUWAC warrants that replacement parts sold hereunder will be free from defects in material or workmanship for a period of 120-days after the date of shipment. RUWAC machines that have been completely re-built at the factory will carry a 180-day warranty from date of shipment. All field repairs preformed by authorized RUWAC service personnel are covered by a 120-day parts only warranty.

2. RUWAC, Inc. will not assume any responsibility under the terms of this limited warranty on equipment, which has not been paid in full. This warranty does not apply to any equipment that has been disassembled, repaired, or otherwise altered by any person without the written authorization of RUWAC'S service department, nor does it apply to any product that has been subjected to failure sure to corrosive or abrasive attack, misused, damaged, or improperly installed, nor does it apply to motors, controls, and components not manufactured by RUWAC, Inc. Motors, controls, and other Sub vendor's components therefor are warranted only to the extent of the manufacture's warranty. All warranty work on such products must be authorized by RUWAC, Inc. and must be performed in an authorized shop as designated by the manufacturer. RUWAC sole liability and buyer's sole and exclusive remedy hereunder is the replacement or repair at RUWAC'S option of products not complying with this warranty. Such repair or replacement shall be F.O.B. RUWAC'S factory, and RUWAC reserves the right to invoice all expenses incurred when repairs are made in the field at the request of the customer, except as specifically set forth herein, RUWAC makes no warranty express or implied, with respect to the products and/or service supplied hereunder, this warranty is in lieu of and excludes all other warranties, including without limitation, any warranty of merchantability, fitness for a particular purpose, or conformance to purchaser's specifications.



SAFETY INSTRUCTIONS

IMPORTANT SAFETY INSTRUCTIONS

READ ALL INSTRUCTIONS BEFORE USING THIS VACUUM

WARNING - Failure to comply with the following warnings could result in serious bodily injury or death!

Personal Safety

- Read and understand all instructions before operating the vacuum.
- Always wear safety approved hearing, eye, head and respiratory protection adequate for fine materials such as silica dust.
- Know how to stop the vacuum quickly in case of emergency.
- Use caution when loading and unloading the vacuum.
- Stay alert. Maintain awareness of the vacuum operation. Use common sense. Do not operate the vacuum when tired or after consumption of any substance that would impair physical function or rational judgment.
- Do not over reach. Keep proper footing and balance.

Work Area Safety

- Never operate the vacuum in any application or job where you are not trained or supervised.
- Keep visitors, children and animals out of the work area.
- Observe all safety regulations for the safe handling of fuel. Gasoline is extremely flammable and its vapors can explode if ignited. Do not refuel indoors or in poorly ventilated areas. Handle fuel in safety containers. Shut off the engine and allow it to cool before refueling. Wipe the vacuum dry if fuel is spilled on it. Always move away from the fueling area before starting the engine. Do not smoke while refueling.
- Do not operate the vacuum while smoking or near an open flame.
- Do not operate the vacuum in areas of combustible material or fumes.
- Operate only in well ventilated areas. Engine exhaust contains carbon monoxide which can cause loss of consciousness and possible death.
- The muffler and engine become very hot during operation. Keep all body parts and foreign material away from the engine while running.
- Avoid dangerous environments. Do not expose the vacuum to rain. Keep work area well lit and clean.



SAFETY INSTRUCTIONS

Vacuum Safety

- Do not leave the vacuum unattended while the engine is running.
- Do not alter the vacuum. Any alteration or modification is misuse and may result in a dangerous condition.
- Do not use damaged equipment or personal protection equipment. Do not disable safety equipment or kill switches.
- Do not operate the vacuum if there is a fuel leak.
- Use extreme caution when maneuvering the vacuum on ramps or loading and unloading from trucks or trailers.
- Use only RUWAC replacement parts. Use of unauthorized parts may create a danger.
- Do not use the vacuum as a vehicle for transporting personnel or equipment.
- Remove the ignition cable from the spark plug before performing vacuum maintenance to prevent accidental engine starting.
- Remove all wrenches from the vacuum before starting.
- Never stand on the vacuum.
- When the vacuum is not in use or transporting, apply the parking brakes on the rear wheels and properly secure the vacuum to prevent accidental movement.
- Please refer to gasoline engine manufacturer's instruction manual prior to operating vacuum.
- GV vacuums are not to be used for the removal of liquids including water or any volatile, viscous, flammable or explosive media. If you are unsure about the application, contact RUWAC.
- GV vacuums are not designed for continuous use and should not be held under constant stress. If you are unsure about the application, contact RUWAC.

!WARNING!
**The engine exhaust from this product
contains chemicals known to the
State of California, USA, to cause
cancer,
birth defects or other reproductive
harm.**





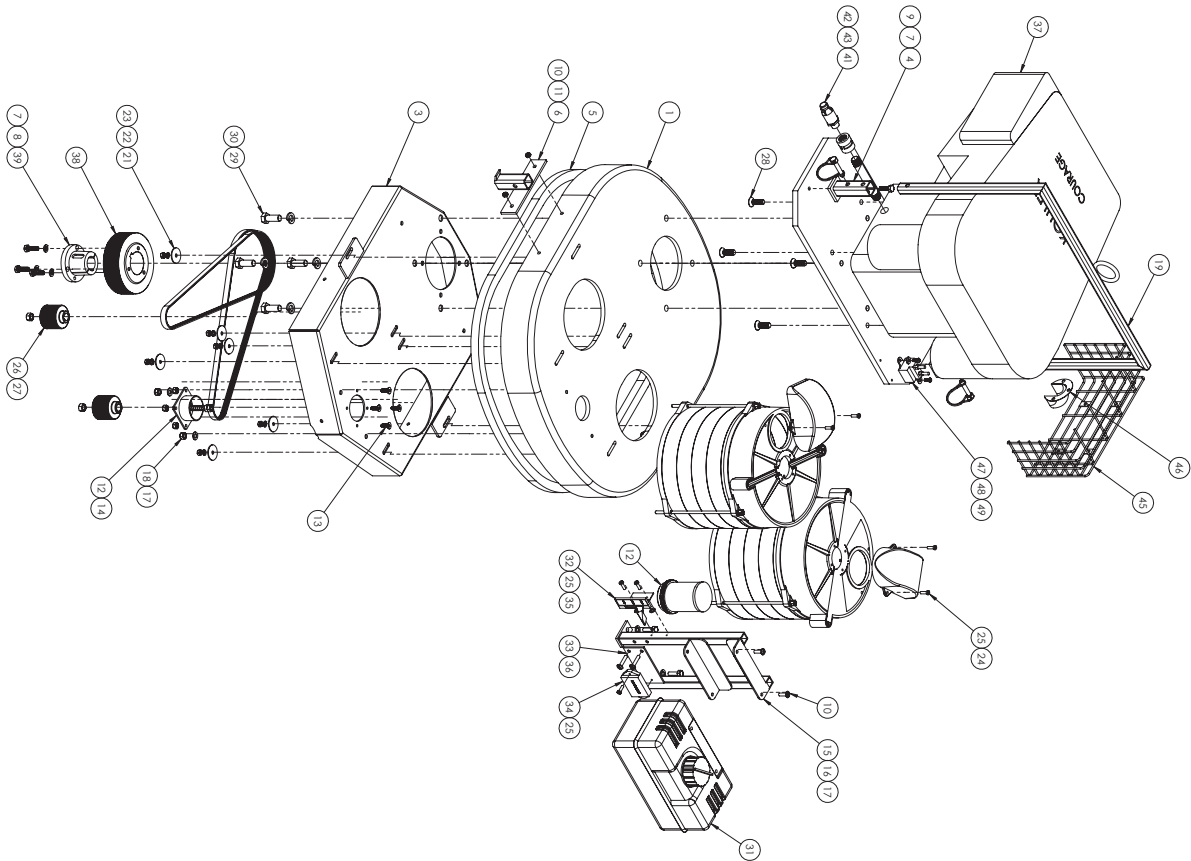
Ruwac Industrial Vacuums
54 Winter Street
Holyoke, MA 01040

Tel: (413) 532-4030
Fax: (413) 532-4039
www.ruwac.com

ISO 9001
REGISTERED



REV	DESCRIPTION	DATE	BY



ITEM NO.	PART NO.	DESCRIPTION	DRAWING NO.	QTY.
1	32871001	D52 MOTOR DECK-REV A	000 M 0023 US	1
2	3181202	GAS MOTOR ADAPTER PLATE	990 A 0005 US	1
3	32888000	SUPPORT PLATE- MOTOR DECK	000 R 0397 US	1
4	60210C	DECK MOUNT WELDMENT- LIFTING ASSY	000 R 0397 US	2
5	32955	D52 MOTOR DECK GASKET 78"	990 R 0034 US	1
6	60211C	CLAMP HOOK WELDMENT- MOTOR DECK	990 R 0034 US	2
7	HW4035404	HEX BOLT 5/16 X 1.8 TLG		2
8	HW4075601	WASHER LOCK 5/16		5
9	25097	RETAINER PIN		2
10	HW5035402	SCREW US SOC HD M6 X 20		4
11	HW5053B01	M6 LOCK NUT		4
12	1020201A	PRESSURE RELIEF VALVE WITH COVER		1
13	HW4024402	SCREW SOC FH 1/4-20 X 3/4		4
14	HW4024401	LOCK NUT 1/4-20	000 R 0330 US-REV C	4
15	2501309F	GAS TANK BRACKET		2
16	HW5034401	BOLT HEX M6 X 25		2
17	HW5034401	WASHER FLAT M6		4
18	HW5034401	WASHER FLAT M6		2
19	HW5034401	REMOVABLE LIFTING BAR- D52		2
20	22201	TUBERINE 5 STAGE 4.0 KW		2
21	HW4074402	WASHER ENDOR 1/4 X 1 1/4		6
22	HW5073601	WASHER LOCK M6		6
23	HW5153401	NUT HEX M6		2
24	32856	EXHAUST DEFLECTOR- TURBINE		2
25	HW507401	SCREW SLOT CH M5 X 1.6		8
26	33058	PULLEY POLY-V, 10 GROOVE, 48MM DIA		2
27	HW2070401	NUT HEX LH M12 1 3/4"		2
28	HW5055401	M10X30 FH SOC		4
29	HW407402	BOLT HEX 1/2-13 X 1 1/4		4
30	HW4077601	WASHER LOCK 1/2"		4
31	250138	FUEL TANK		1
32	25013C	THROTTLE CONTROL		1
33	2501309J	HOIR MEER BRACKET	000 R 0330 US-REV C	1
34	2501309E	HOIR MEER		1
35	HW5073401	WASHER FLAT M6		1
36	HW5123401	SCREW M6 X 30 SOC HD FLANGED		2
37	25013	KOHLER COUPLAGE 15 HP MOTOR		2
38	3292316	125MM SHEAVE, 14 GROOVE		1
39	3305201US	BUSHING, PI, 1"		1
40	33015	BELT, 3561, 6 GROOVE, POLY-V		2
41	97961	DRAN VALVE OIL		1
42	2006234	NIPPLE, TUL, .375 IPT X 4.5 LG		1
43	610025	COUPLING, TUL, .375 IPT, BRASS		1
44	2501309MM	KOHLER MUFFLER		1
45	2501309M	MUFFLER GUARD		1
46	2501309D	KOHLER SOLENOID		1
47	250138	#10 LIA WAFER		2
48	HW4073401	#10 LIA WAFER		2
49	HW4022401	#10 LIA WAFER		2

ITEM NO.	PART NO.	DESCRIPTION	DRAWING NO.	QTY.

ITEM NO.	PART NO.	DESCRIPTION	DRAWING NO.	QTY.

ITEM NO.	PART NO.	DESCRIPTION	DRAWING NO.	QTY.

ITEM NO.	PART NO.	DESCRIPTION	DRAWING NO.	QTY.

ITEM NO.	PART NO.	DESCRIPTION	DRAWING NO.	QTY.

ITEM NO.	PART NO.	DESCRIPTION	DRAWING NO.	QTY.

ITEM NO.	PART NO.	DESCRIPTION	DRAWING NO.	QTY.

ITEM NO.	PART NO.	DESCRIPTION	DRAWING NO.	QTY.

ITEM NO.	PART NO.	DESCRIPTION	DRAWING NO.	QTY.

ITEM NO.	PART NO.	DESCRIPTION	DRAWING NO.	QTY.

ITEM NO.	PART NO.	DESCRIPTION	DRAWING NO.	QTY.

ITEM NO.	PART NO.	DESCRIPTION	DRAWING NO.	QTY.

ITEM NO.	PART NO.	DESCRIPTION	DRAWING NO.	QTY.

ITEM NO.	PART NO.	DESCRIPTION	DRAWING NO.	QTY.

ITEM NO.	PART NO.	DESCRIPTION	DRAWING NO.	QTY.

ITEM NO.	PART NO.	DESCRIPTION	DRAWING NO.	QTY.

ITEM NO.	PART NO.	DESCRIPTION	DRAWING NO.	QTY.

ITEM NO.	PART NO.	DESCRIPTION	DRAWING NO.	QTY.

ITEM NO.	PART NO.	DESCRIPTION	DRAWING NO.	QTY.

ITEM NO.	PART NO.	DESCRIPTION	DRAWING NO.	QTY.

ITEM NO.	PART NO.	DESCRIPTION	DRAWING NO.	QTY.

ITEM NO.	PART NO.	DESCRIPTION	DRAWING NO.	QTY.

ITEM NO.	PART NO.	DESCRIPTION	DRAWING NO.	QTY.

ITEM NO.	PART NO.	DESCRIPTION	DRAWING NO.	QTY.

ITEM NO.	PART NO.	DESCRIPTION	DRAWING NO.	QTY.

ITEM NO.	PART NO.	DESCRIPTION	DRAWING NO.	QTY.

ITEM NO.	PART NO.	DESCRIPTION	DRAWING NO.	QTY.

ITEM NO.	PART NO.	DESCRIPTION	DRAWING NO.	QTY.

ITEM NO.	PART NO.	DESCRIPTION	DRAWING NO.	QTY.

ITEM NO.	PART NO.	DESCRIPTION	DRAWING NO.	QTY.

ITEM NO.	PART NO.	DESCRIPTION	DRAWING NO.	QTY.

ITEM NO.	PART NO.	DESCRIPTION	DRAWING NO.	QTY.

ITEM NO.	PART NO.	DESCRIPTION	DRAWING NO.	QTY.

ITEM NO.	PART NO.	DESCRIPTION	DRAWING NO.	QTY.

ITEM NO.	PART NO.	DESCRIPTION	DRAWING NO.	QTY.

ITEM NO.	PART NO.	DESCRIPTION	DRAWING NO.	QTY.

ITEM NO.		PART NO.		DESCRIPTION		DRAWING NO.		QTY.	

ITEM NO.		PART NO.		DESCRIPTION		DRAWING NO.		QTY.	

ITEM NO.		PART NO.		DESCRIPTION		DRAWING NO.		QTY.	

ITEM NO.		PART NO.		DESCRIPTION		DRAWING NO.		QTY.	

ITEM NO.		PART NO.		DESCRIPTION		DRAWING NO.		QTY.	

ITEM NO.		PART NO.		DESCRIPTION		DRAWING NO.		QTY.	

ITEM NO.		PART NO.		DESCRIPTION		DRAWING NO.		QTY.	

ITEM NO.		PART NO.		DESCRIPTION		DRAWING NO.		QTY.	

ITEM NO.		PART NO.		DESCRIPTION		DRAWING NO.		QTY.	

ITEM NO.		PART NO.		DESCRIPTION		DRAWING NO.		QTY.	

ITEM NO.		PART NO.		DESCRIPTION		DRAWING NO.		QTY.	

ITEM NO.		PART NO.		DESCRIPTION		DRAWING NO.		QTY.	

ITEM NO.		PART NO.		DESCRIPTION		DRAWING NO.		QTY.	

ITEM NO.		PART NO.		DESCRIPTION		DRAWING NO.		QTY.	

ITEM NO.		PART NO.		DESCRIPTION		DRAWING NO.		QTY.	

ITEM NO.		PART NO.		DESCRIPTION		DRAWING NO.		QTY.	

ITEM NO.		PART NO.		DESCRIPTION		DRAWING NO.		QTY.	

ITEM NO.		PART NO.		DESCRIPTION		DRAWING NO.		QTY.	

ITEM NO.		PART NO.		DESCRIPTION		DRAWING NO.		QTY.	

ITEM NO.		PART NO.		DESCRIPTION		DRAWING NO.		QTY.	

ITEM NO.		PART NO.		DESCRIPTION		DRAWING NO.		QTY.	

ITEM NO.		PART NO.		DESCRIPTION		DRAWING NO.		QTY.	

ITEM NO.		PART NO.		DESCRIPTION		DRAWING NO.		QTY.	

ITEM NO.		PART NO.		DESCRIPTION		DRAWING NO.		QTY.	

ITEM NO.		PART NO.		DESCRIPTION		DRAWING NO.		QTY.	

ITEM NO.		PART NO.		DESCRIPTION		DRAWING NO.		QTY.	

ITEM NO.		PART NO.		DESCRIPTION		DRAWING NO.		QTY.	

ITEM NO.		PART NO.		DESCRIPTION		DRAWING NO.		QTY.	

ITEM NO.		PART NO.		DESCRIPTION		DRAWING NO.		QTY.	

ITEM NO.		PART NO.		DESCRIPTION		DRAWING NO.		QTY.	

ITEM NO.		PART NO.		DESCRIPTION		DRAWING NO.		QTY.	

ITEM NO.		PART NO.		DESCRIPTION		DRAWING NO.		QTY.	

ITEM NO.		PART NO.		DESCRIPTION		DRAWING NO.		QTY.	

ITEM NO.		PART NO.		DESCRIPTION		DRAWING NO.		QTY.	

ITEM NO.		PART NO.		DESCRIPTION		DRAWING NO.		QTY.	

ITEM NO.		PART NO.		DESCRIPTION		DRAWING NO.		QTY.	

ITEM NO.		PART NO.		DESCRIPTION		DRAWING NO.		QTY.	

ITEM NO.		PART NO.		DESCRIPTION		DRAWING NO.		QTY.	

ITEM NO.		PART NO.		DESCRIPTION		DRAWING NO.		QTY.	

ITEM NO.		PART NO.		DESCRIPTION		DRAWING NO.		QTY.	

ITEM NO.		PART NO.		DESCRIPTION		DRAWING NO.		QTY.	

ITEM NO.		PART NO.		DESCRIPTION		DRAWING NO.		QTY.	

ITEM NO.		PART NO.		DESCRIPTION		DRAWING NO.		QTY.	

ITEM NO.		PART NO.		DESCRIPTION		DRAWING NO.		QTY.	

ITEM NO.		PART NO.		DESCRIPTION		DRAWING NO.		QTY.	

ITEM NO.		PART NO.		DESCRIPTION		DRAWING NO.		QTY.	

ITEM NO.		PART NO.		DESCRIPTION		DRAWING NO.		QTY.	

ITEM NO.		PART NO.		DESCRIPTION		DRAWING NO.		QTY.	

ITEM NO.		PART NO.		DESCRIPTION		DRAWING NO.		QTY.	

ITEM NO.		PART NO.		DESCRIPTION		DRAWING NO.		QTY.	

ITEM NO.		PART NO.		DESCRIPTION		DRAWING NO.		QTY.	

ITEM NO.		PART NO.		DESCRIPTION		DRAWING NO.		QTY.	

ITEM NO.		PART NO.		DESCRIPTION		DRAWING NO.		QTY.	

ITEM NO.		PART NO.		DESCRIPTION		DRAWING NO.		QTY.	

ITEM NO.		PART NO.		DESCRIPTION		DRAWING NO.		QTY.	

ITEM NO.		PART NO.		DESCRIPTION		DRAWING NO.		QTY.	

ITEM NO.		PART NO.		DESCRIPTION		DRAWING NO.		QTY.	

ITEM NO.		PART NO.		DESCRIPTION		DRAWING NO.		QTY.	

ITEM NO.		PART NO.		DESCRIPTION		DRAWING NO.		QTY.	

ITEM NO.		PART NO.		DESCRIPTION		DRAWING NO.		QTY.	

ITEM NO.		PART NO.		DESCRIPTION		DRAWING NO.		QTY.	

ITEM NO.		PART NO.		DESCRIPTION		DRAWING NO.		QTY.	

ITEM NO.		PART NO.		DESCRIPTION		DRAWING NO.		QTY.	

ITEM NO.		PART NO.		DESCRIPTION		DRAWING NO.		QTY.	

ITEM NO.		PART NO.		DESCRIPTION		DRAWING NO.		QTY.	

ITEM NO.		PART NO.		DESCRIPTION		DRAWING NO.		QTY.	

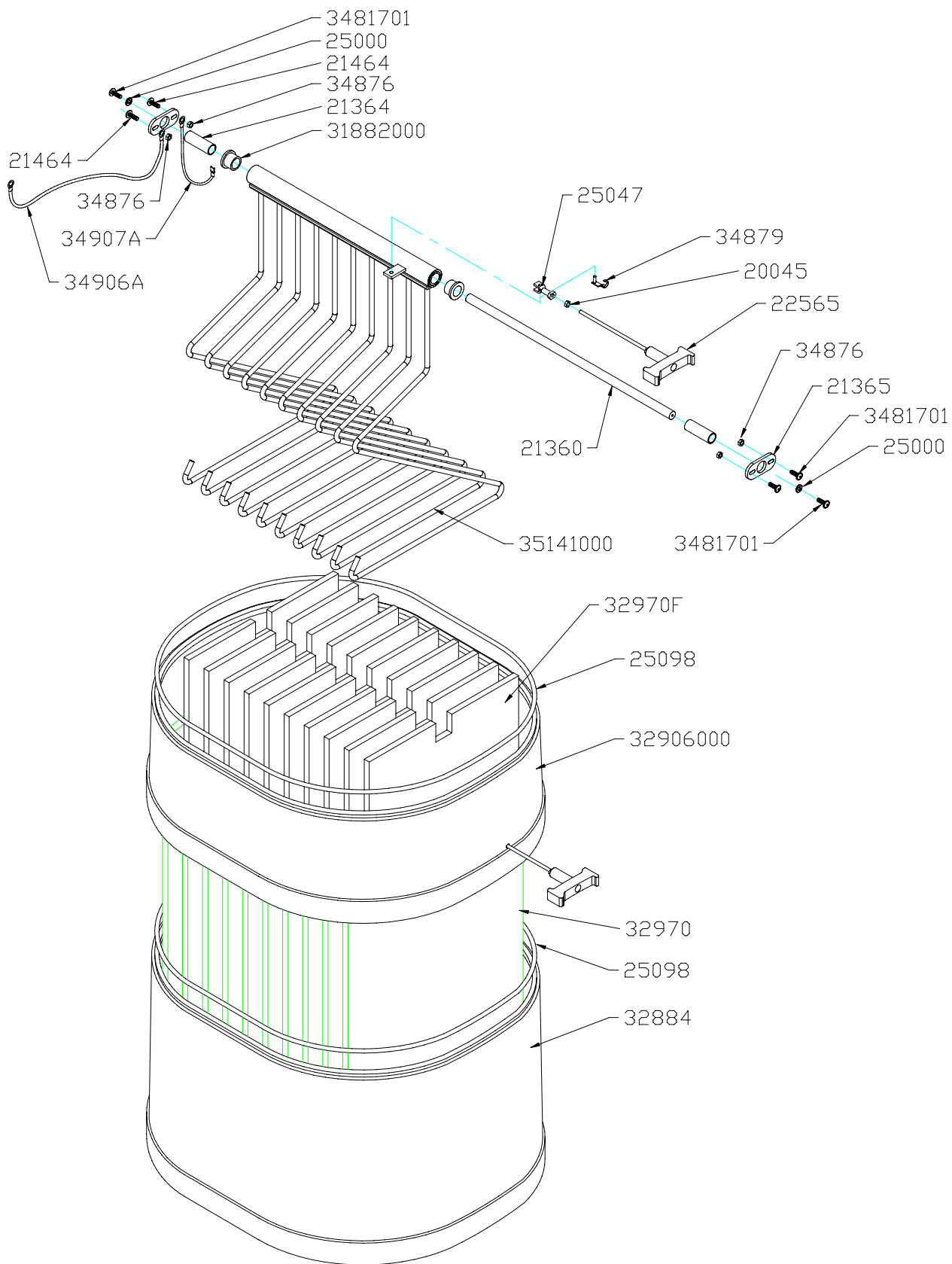
ITEM NO.		PART NO.		DESCRIPTION		DRAWING NO.		QTY.	

ITEM NO.		PART NO.		DESCRIPTION		DRAWING NO.		QTY.	

ITEM NO.		PART NO.		DESCRIPTION		DRAWING NO.		QTY.	

ITEM NO.		PART NO.		DESCRIPTION		DRAWING NO.		QTY.	

ITEM NO.		PART NO.		DESCRIPTION		DRAWING NO.		QTY.	



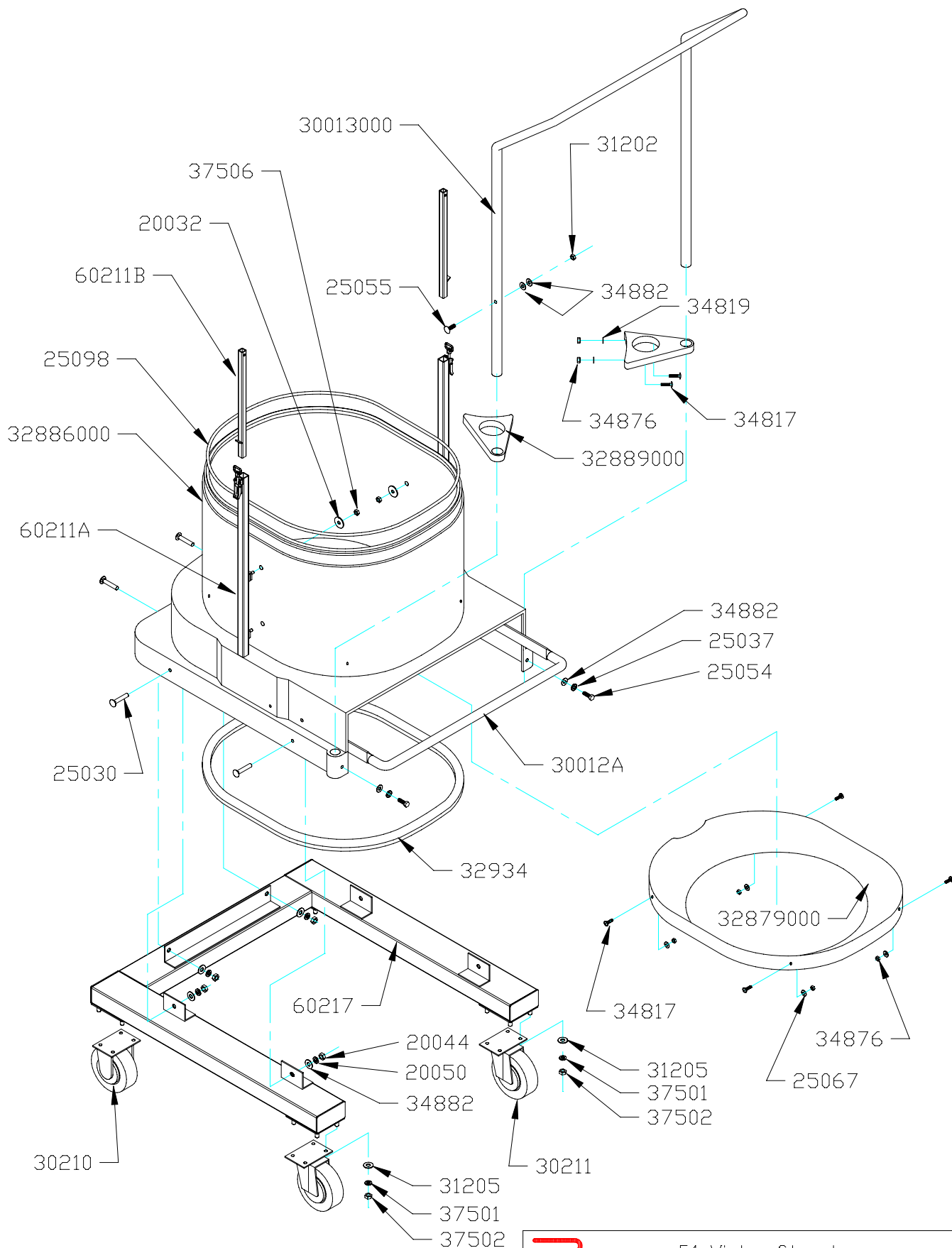
54 Winter Street
Holyoke, MA 01040, USA

DS2 FILTER ASSEMBLY

REV C REV DATE: 7/25/08 D.W.N. D.J.S. DATE: 12-19-03

DS2 FILTER ASSEMBLY

PART NUMBER	DESCRIPTION	QTY
3481701	M6X25 ALLEN HEAD SCREW	6
25000	1/4" STAR WASHER,EXTERNAL	2
21464	M6X30MM ALLEN HEAD SCREW	2
34876	M6 LOCK NUT	4
21364	GUIDE FOR SHAKER ROD	2
31882000	BUSHING,BRASS,20X26X30MM	2
25047	STEEL YOKE ENDS	1
34879	SPRING CLIP,6X12	1
20045	M8 HEX NUT,FOUR CORNER,ZINC	1
22565	SHAKER BAR WITH SWIVEL HANDLE	1
21365	SUPPORT BRACKET FOR FILTER	2
21360	SLIDE BAR FOR FILTER BASKET	1
35141000	FILTER SHAKER INSERT	1
32970F	FILTER INSERT,4.5M2	10
25098	GASKET,ROUND,10MM	2
34907A	GROUND WIRE,DS2 FROM SHAKER TO MOTOR DECK	1
34906A	GROUND WIRE,4.5M FILTER,GROUND	1
32906000	HOUSING SPACER,D2,SMALL, RED	1
32884	HOUSING SPACER,DS2,LARGE, RED	1
32970	FILTER,48 SQ/FT,4.5 M2,D2	1



54 Winter Street
Holyoke, MA 01040, USA

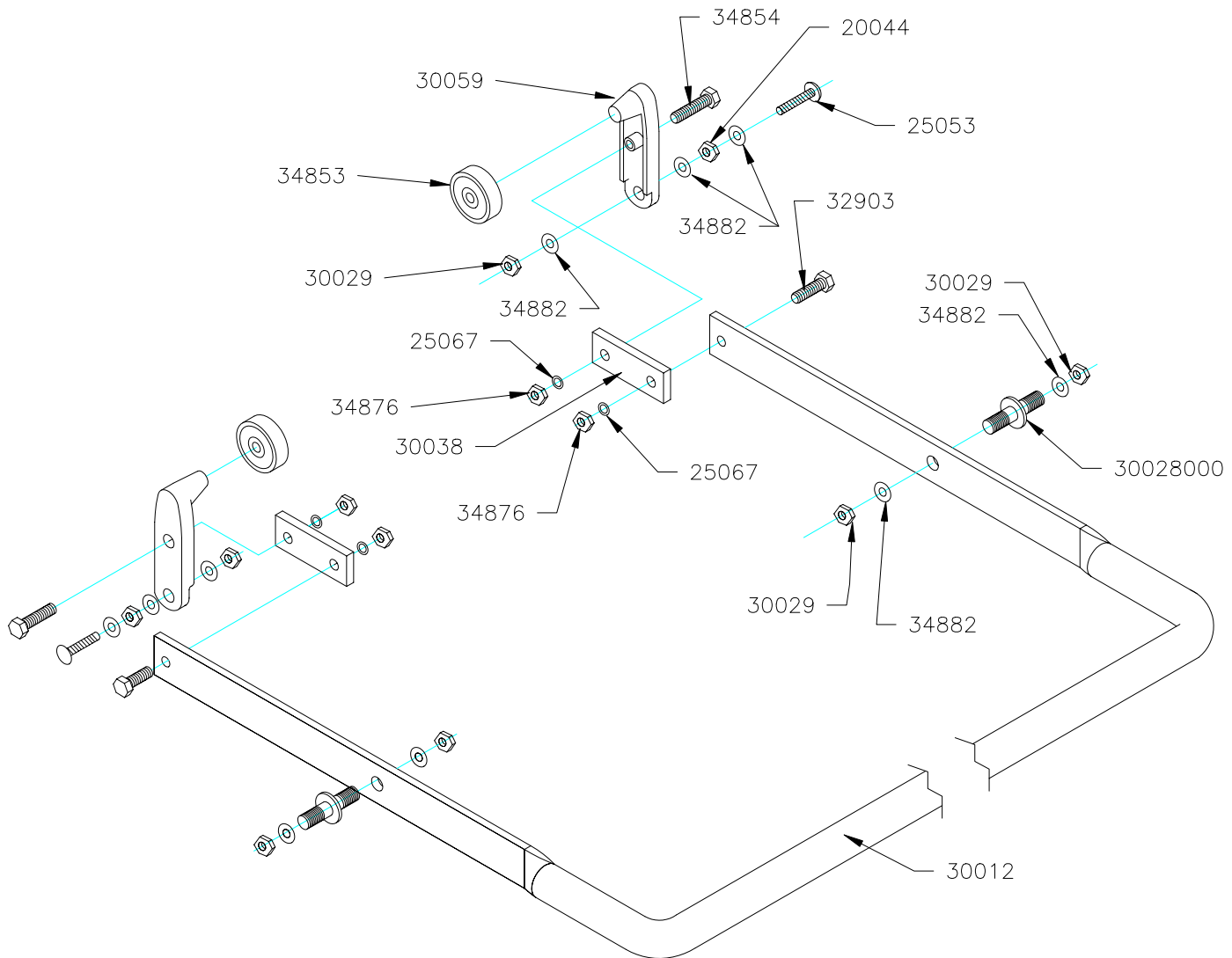
DS2 BASE ASSEMBLY

REV C	REV DATE: 7/7/08	D.W.N. D.J.S.	DATE: 12-19-03
-------	------------------	---------------	----------------

DS2 BASE ASSEMBLY

PART NUMBER	DESCRIPTION	QTY
31202	5/16-18 NYL. LOCK-NUT	2
30013000	PUSH HANDLE,D2	1
25055	5/16-18 X 2" CARRIAGE BOLT	2
34882	M8 FLAT WASHER	12
34819	M6 FENDER WASHER	4
34817	M6 X 20 ULS ALLEN HEAD SCREW	12
34876	M6 LOCK NUT	8
32889000	M6 LOCK NUT	2
25037	M8 WASHER,EXTERNAL	2
25054	M8 X 25 HEX BOLT	2
30012A	DUST PAN LEVER ASSEMBLY,D2	1
328721	CARRIAGE BOLT,3/8" X 2" LONG	8
32934	GASKET,D2 LOWER HOUSING,20X15	1
32879000	CONE,INTERNAL DEFLECTOR INSERT	1
25067	M6 FLAT WASHER ZINC	4
31205	5/16 FLAT WASHER	16
37501	3/8 SPLIT WASHER	16
37502	3/8 HEX NUT	8
30211	CASTER 6", SWIVEL WITH BRAKE	2
20053	3/8" X 3/4" HEX CAP BOLT,ZINC	8
20050	M8 LOCK WASHER	6
20044	M8 HEX NUT -8	6
30210	CASTER 6" RIGID	2
60217	DS2 PORTABLE SUPPORT STAND	1
25030	M8X30 CARRIAGE BOLT	6
25000	1/4" STAR WASHER,EXTERNAL	4
34817A	M6 BLIND PEM	4
32886000	LOWER HOUSING,D2,RED	1

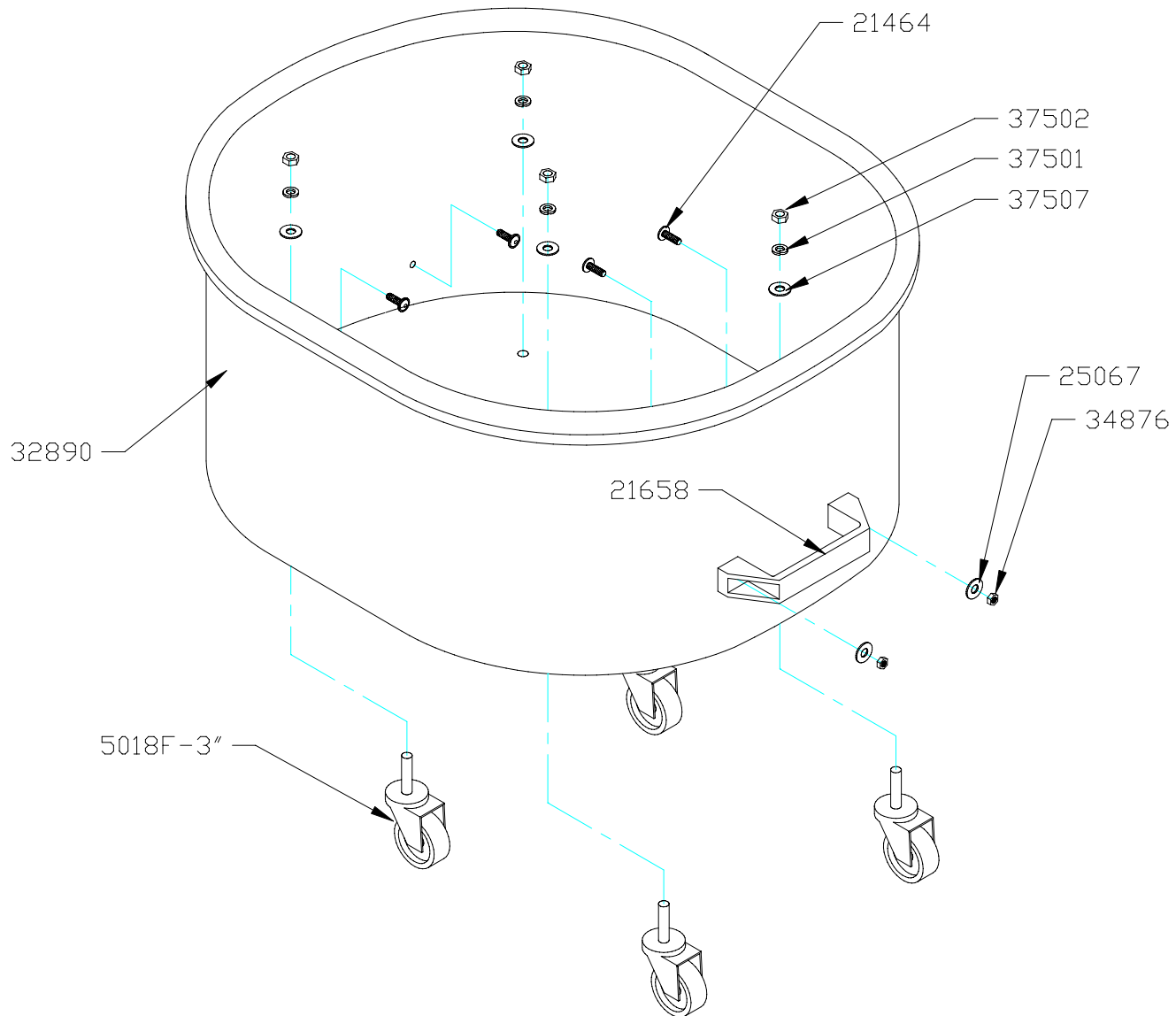
REV.	DESCRIPTION	NAME	DATE
B	PRINT UPDATED	D.J.S.	5-29-03



<p>Tolerances Unless Otherwise Specified Break Sharp Edges Two Place Decimals +/- .03 Three Place Decimals +/- .010 Per ANSI Y14.5</p>	<p>Ruwac 728 Main Street Holyoke, MA 01040, USA</p>		
	<p>DUST PAN LEVER DS-2 SERIES PORTABLE</p>		
BIN:	SIZE A	MAG FILE	DWG NO. 000 E 0068 US
DATE: 1-08-01	SCALE NONE	D.W.N. D.J.S.	REV B
		SHEET	01 OF 01

DS2 DUST PAN LEVER ASSEMBLY

PART NUMBER	DESCRIPTION	QTY
30012	FOOT LEVER, D2	1
30028000	BOLT,DOUBLE SIDED,M8X38, FOR DS2 DUST PAN ASSEMBLY	2
34882	M8 FLAT WASHER	10
30029	M8 LOCK NUT	6
32903	M6X1.0 X 20 HEX CAP SCREW,ZINC	2
25053	M8 X 35 CARRIAGE SCREW	2
20044	M8 HEX NUT	2
34854	M6X25 HEX CAP 8.8	2
30059	DUST PAN TENSION LEVER,D2	2
34853	DUST PAN LEVER BEARING	2
25067	M6 FLAT WASHER	4
34876	M6 LOCK NUT,ZINC	4
30038	FLAT STEEL CONNECTOR,D2	2



54 Winter Street
Holyoke, MA 01040, USA

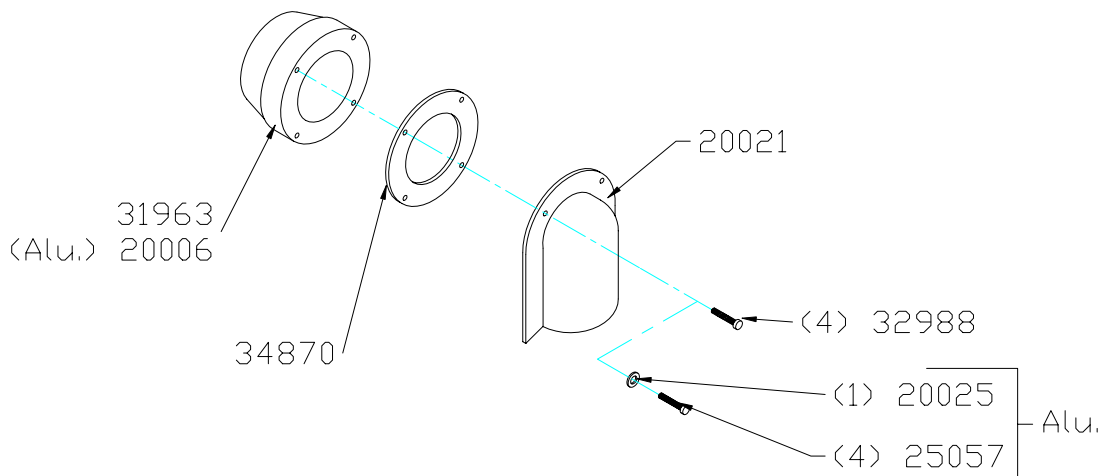
DS2 DUST PAN ASSEMBLY

REV A	REV DATE: 11/12/08	D.W.N. D.J.S.	DATE: 12-19-03
-------	--------------------	---------------	----------------

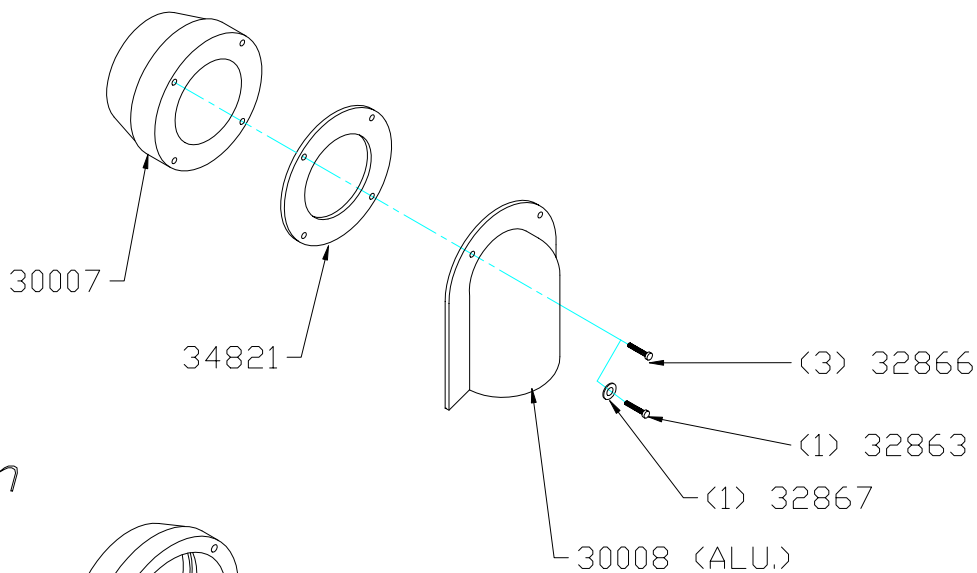
DS2 DUST PAN ASSEMBLY

PART NUMBER	DESCRIPTION	QTY
34876	M6 LOCK NUT,ZINC	4
25067	M6 FLAT WASHER	4
37502	3/8 HEX NUT	4
37501	3/8 SPLIT WASHER	4
37507	3/8 FLAT WASHER, ZINC	4
21464	M6X1.0 X 30 HEX CAP SCREW,ZINC	4
21658	HANDLE,BLACK,2X6MM,W/HOLES	2
5018F	CASTER 3/8 X 16 X 1 1/16	4
32890	DUST PAN,D2,RED	1

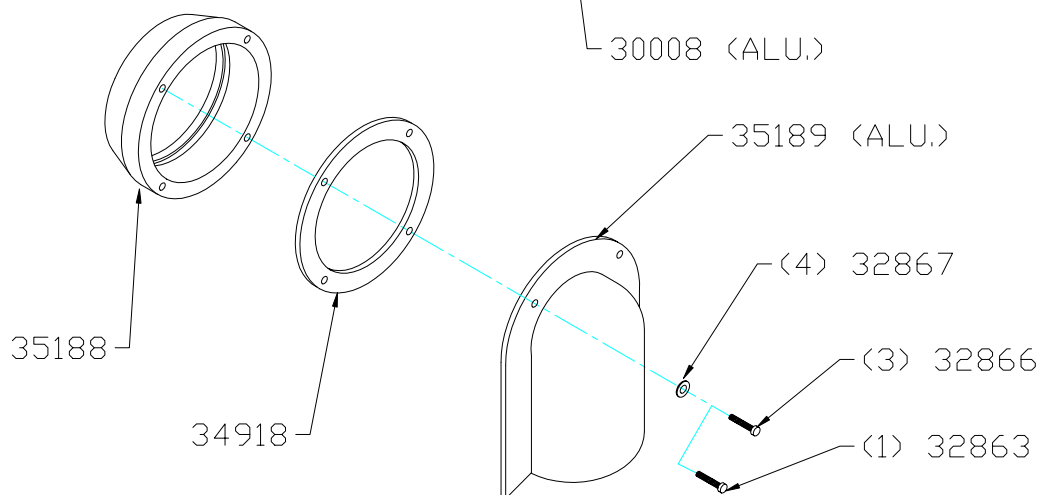
50mm



70mm



100mm



728 Main Street
Holyoke, MA 01040, USA

50mm, 70mm, & 100mm INLET ASSEMBLY

REV	D.W.N.	D.J.S.	DATE:	6-11-03
-----	--------	--------	-------	---------

50mm INLET

PART NUMBER	DESCRIPTION	QTY
31963	INLET,50MM, GFK BLACK PLASTIC	1
20006	INLET,50MM,ALUMINUM	1
34870	GASKET 50MM INLET	1
20021	INLET DEFLECTOR,50MM,METAL	1
32988	#8 X 1 PHIL TRUSS HEAD,ZINC	4
20025	WASHER,STAR LOCKING,M4	1
25057	M4X20 SOCKET SCREW CAP	4

70mm INLET

30007	INLET,70MM,ALUMINUM	1
34821	GASKET,70MM INLET	1
30008	DEFLECTOR,70MM,ALUMINUM	1
32866	M5-.8X30 SOCKET CAP,ALLEN HEAD	3
32863	M5-.8X20 SOCKET CAP SCREW	1
32867	M5 EXT TOOTH LOCK WASHER ZINC	1

100mm INLET

35188	INLET,100MM,ALUMINUM	1
34918	GASKET,100MM INLET	1
35189	DEFLECTOR,100MM,ALUMINUM	1
32867	M5 EXT TOOTH LOCK WASHER ZINC	4
32866	M5-.8X30 SOCKET CAP,ALLEN HEAD	3
32863	M5-.8X20 SOCKET CAP SCREW	1